

Flow provides visibility of application traffic running on the network, showing top sources and conversations for each.

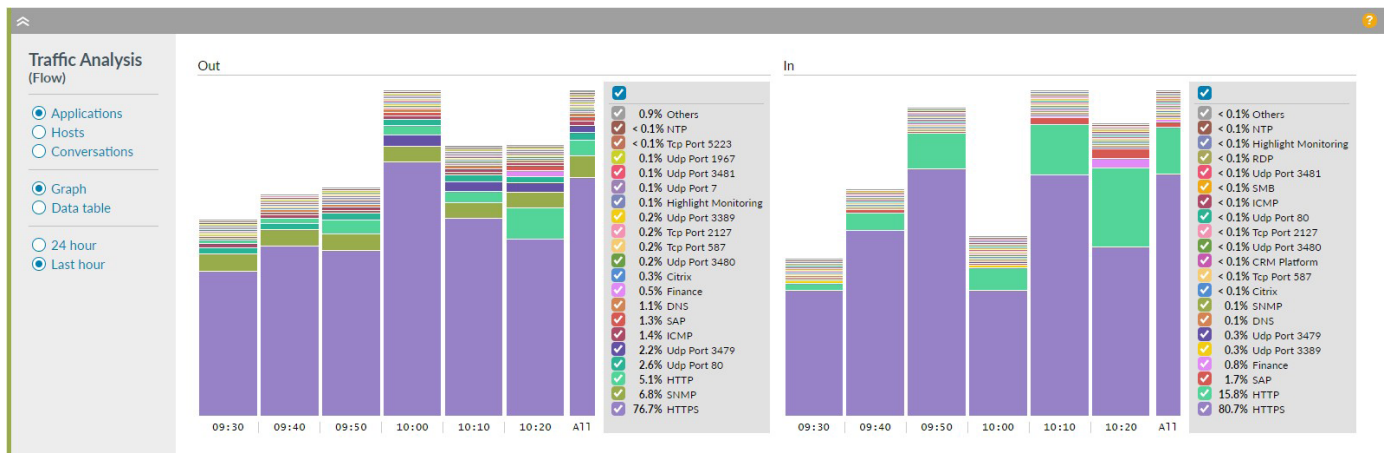


Most businesses understand the need for a reliable and fast network, but your choice of service provider or the reliability of your IT estate aren't the only way of controlling the quality of your connectivity. Modern users bring with them a plethora of personal devices and the expectation of high quality Internet access for all their needs, not just for work.

Flow allows you and your corporate customers to see:

- Which applications are consuming company network resources
- How business critical application are performing
- Whether unapproved applications (shadow IT) are impacting their resources

Traffic Analysis Graphs



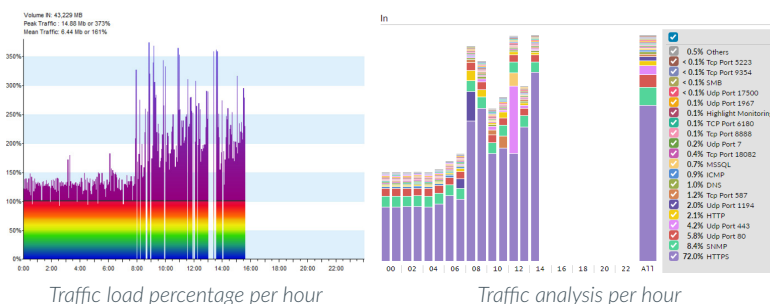
The panel displays the top 20 (plus others grouped together) with outbound traffic on the left and inbound on the right.

Applications: applications running across the selected link

Hosts: hosts sending across the selected link

Conversations: conversations either sending or receiving traffic (only visible in data table view, not graph)

Troubleshooting



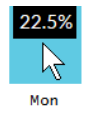
Using traffic load and Flow data side by side you can easily see the correlation of high utilisation of applications and endpoints.

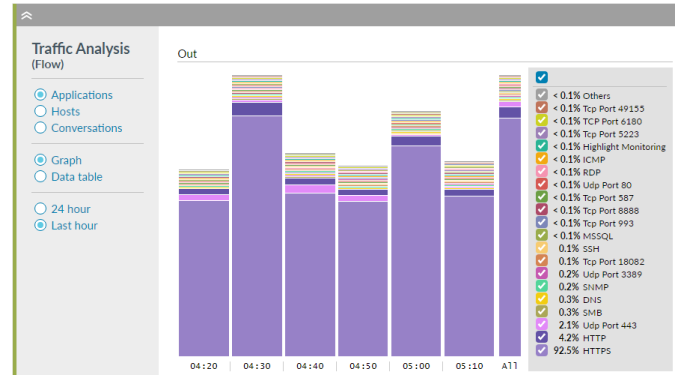
Flow allows you to see which applications and endpoints are creating the most noise and traffic, allowing remedial action to be taken such as increased bandwidth or traffic-control implementation.

Top Applications/Talkers

Switch between graphical and data-table views of the information:

Graph displays bar charts for the selected period of time

 Hover over each coloured section to see the percent of total traffic used by that host/application during the selected time period. Check only those of interest or all.



Top Conversations

With **Data Table** selected, there is a further option to view a list of the top ten conversations involved with the entry.

If you clicked when looking at an application such as email, you'll see the ten busiest pairs of hosts using this application - in each case one inside your network, one outside it - along with the volume and percent of traffic each has created.

Internal Host	External Host	Volume	Percent
192.229.233.50	192.168.100.137	21.486 MB	6.02%
a92-123-185-162.deploy.static.akamaitechnologies.com	192.168.100.44	18.204 MB	5.10%
server-143-204-192-29.lhr3.r.cloudfront.net	192.168.100.114	17.607 MB	4.93%
93.184.220.70	192.168.100.137	15.908 MB	4.45%
23.100.48.106	192.168.100.75	14.297 MB	4.00%
23.100.48.106	192.168.100.148	12.673 MB	3.55%
23.111.9.35	192.168.100.62	10.472 MB	2.93%
a23-198-74-134.deploy.static.akamaitechnologies.com	192.168.100.44	8.759 MB	2.45%
23.100.48.106	192.168.100.93	7.684 MB	2.15%
dcl2-phx.viv-phx.salesforce.com	192.168.100.141	5.937 MB	1.66%

Highlight makes it easy to customise your in-house applications or known endpoints/servers. Please note that Flow is only available on compatible devices such as Cisco, Juniper and Riverbed.

Flow works hand-in-hand with Highlight's AppVis, application visibility for your network and devices.



AppVis
Application Awareness

