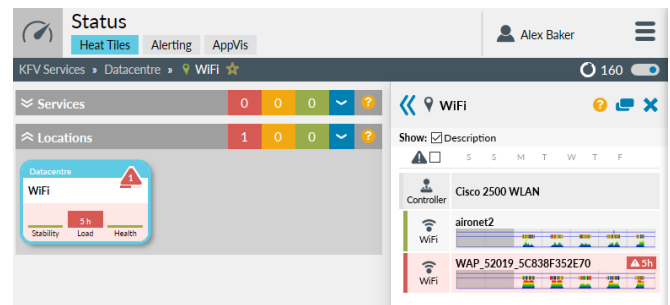


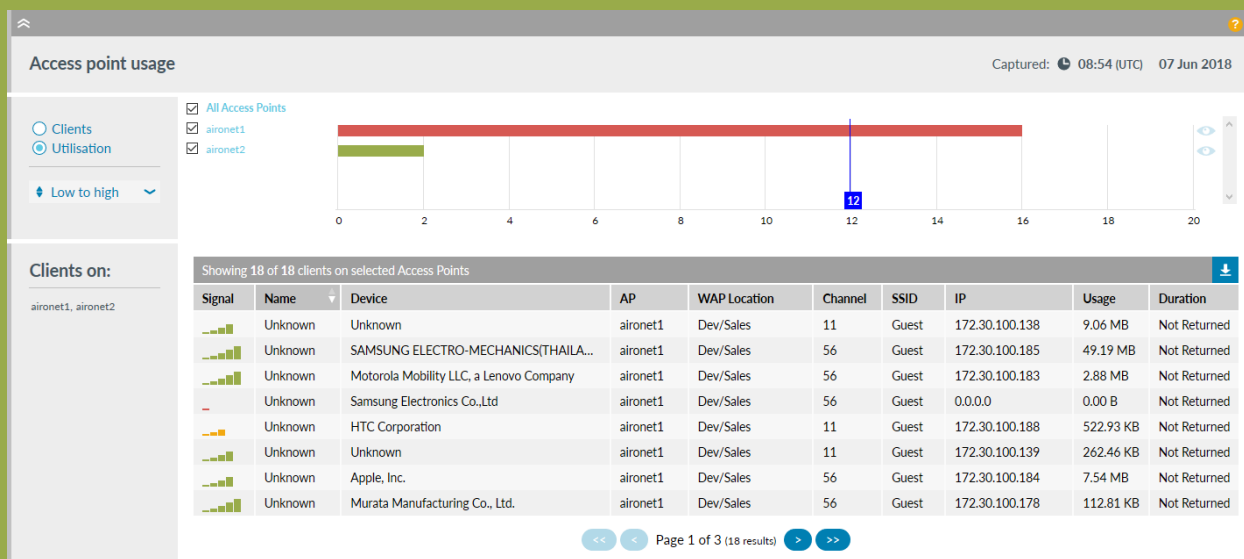
See clearly how your Wireless network is performing

WiFi is 'critical infrastructure' for most organisations, connecting static and mobile devices and is expected to support real-time applications like IP Telephony and Unified Communications.

Wireless networking is a complex environment, and a common cause of business performance issues and complaints.



Highlight's WiFi monitoring is integrated into our unique single pane of glass, covering wide-area networks, applications and other IT, providing alerting through heat tiles and emails with real-time status, as well as enabling historical trending for capacity planning.



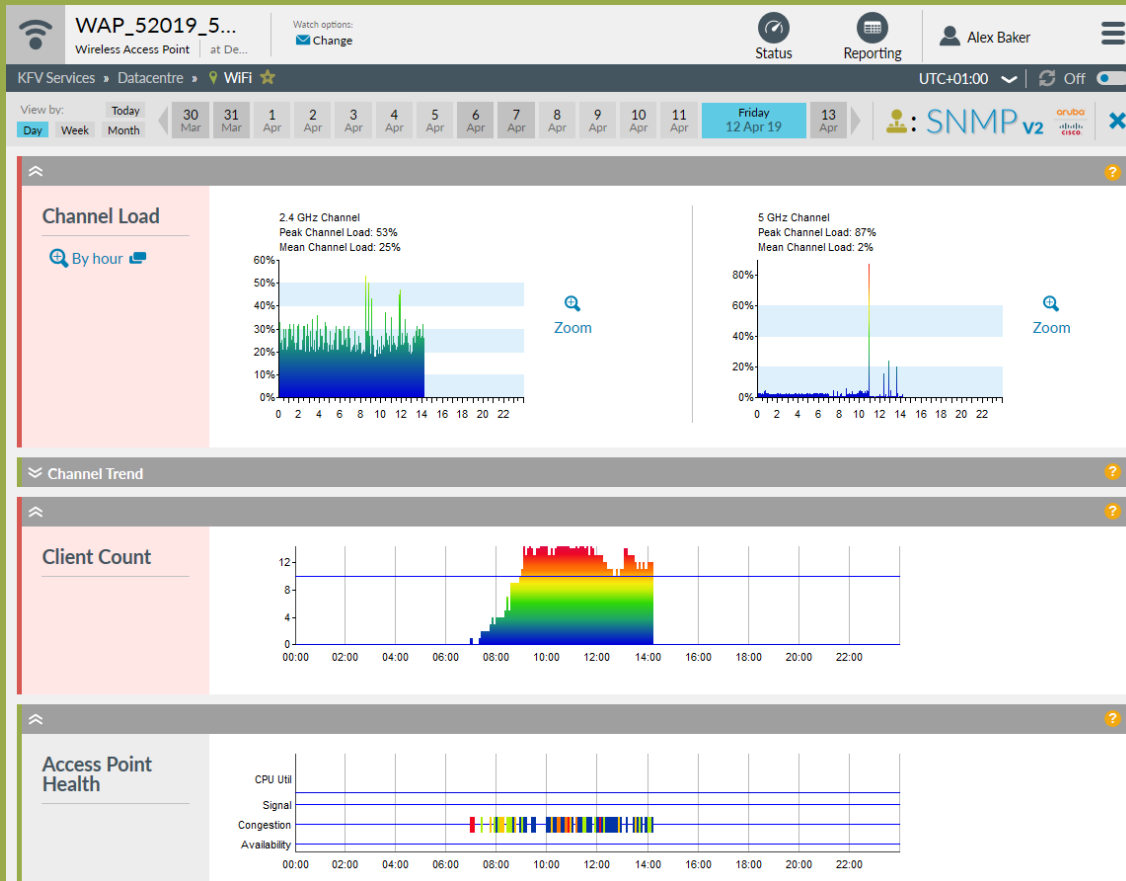
WiFi features in Highlight show...

- The total volume of Wireless traffic flowing in and out of the Wireless Access point (WAP)
- The percentage utilisation of the two radio channels, 2.4GHz and 5GHz, on that WAP
- Whether a WAP is up or down, Highlight checks that connectivity to the WAP is up and stable, and that the radios are working correctly
- The number of client devices connected to the WAP, and their address and device type
- Metrics to indicate congestion level on the WAP radio networks
- A picture of how well clients are connecting by monitoring signal strength, per client, across the whole WAP

WiFi overview

Applications can only deliver consistent business benefits when they get the network performance they need. WiFi monitoring and reporting helps business-level users to see clearly the performance of their WiFi networks and access points.

Highlight WiFi monitoring and reporting is a performance visibility tool that works with Cisco, Aruba, Meraki and Aerohive wireless devices.



Business benefits

- Deliver powerful, shared, business-level insight into how WiFi network and access points are performing
- Accurately meet customers' quality of experience demands for WiFi Access Points
- Validate that WiFi Access Points are performing at the levels required by the business
- Visualise the status, health and utilisation of large or diverse Wireless networks, on a single screen
- Enable fact-based discussions between providers and customers using shared performance data of the business WiFi infrastructure
- Enable WiFi operation and performance with clear indicators of load, stability and health of your wireless networks